

# C.SCOPE



## **C.SCOPE** **Locator Accessories**

Accessory Range for Pipe & Cable Location Equipment

[www.cscope.co.uk](http://www.cscope.co.uk)

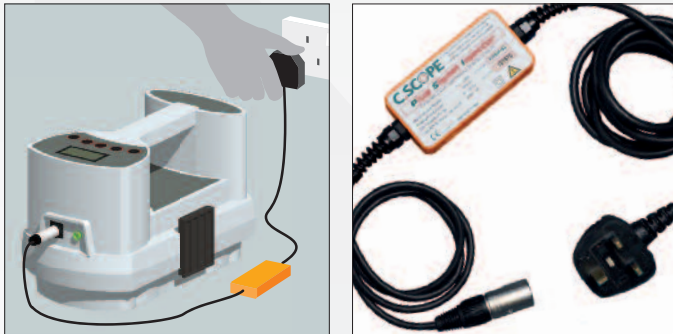
# C.SCOPE ACCESSORIES

**SIGNAL CLAMP** Apply the Signal Generator or MXT Transmitter signal effectively to any cable by using the Signal Clamp. An extremely practical way to allow individual cables to be traced even when amongst other cables.



SIGNAL CLAMP TECHNICAL SPECIFICATION	
Part Number:	YIRC-33-8
Frequency:	Operates at 33kHz and 8kHz
Maximum Cable/Pipe Diameter:	105 mm
Lead Length:	2 m
Approvals:	Conforms to BS EN61010-1
IP Rating:	68

**SIGNAL INJECTOR** Apply the Signal Generator or MXT Transmitter signal to an electrical cable quickly and safely by using a standard wall socket as the point of connection with the C.Scope Signal Injector.

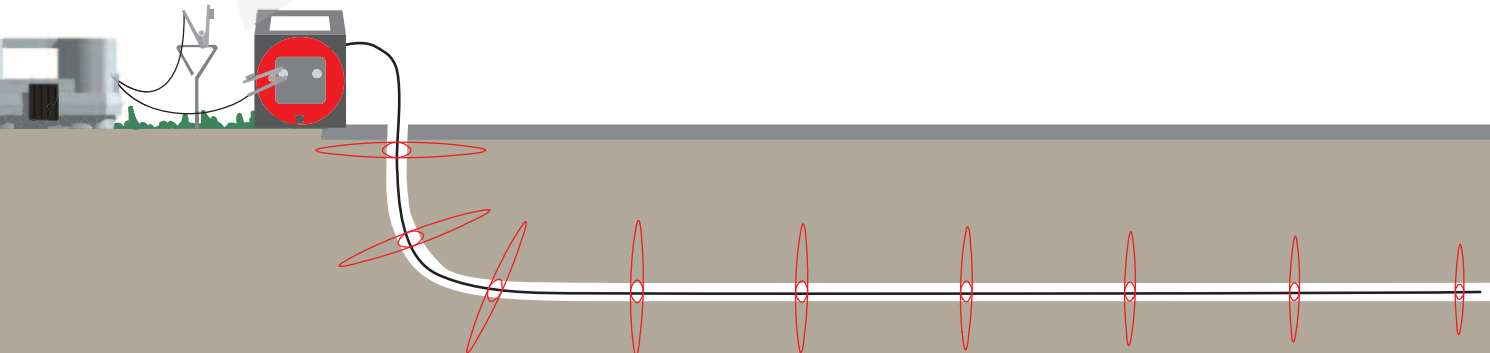


SIGNAL INJECTOR TECHNICAL SPECIFICATION	
Part Number:	YIRIP-33-8
Frequency:	Operates at 33kHz
Maximum Line Voltage:	250 V rms
Maximum Power:	100mW (nominal mains load)
Mains power frequency range:	45-65Hz
Approvals:	Conforms to BS EN61010-1
IP Rating:	54

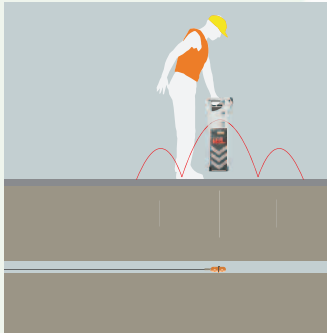
**PLASTIC PIPE TRACERS** The unique C.Scope Plastic Pipe Tracers are designed specifically to allow SMALL diameter, non-metallic pipes to be traced. Developed as a result of requests from the British gas industry the C.Scope Plastic Pipe Tracers are the smallest diameter product on the market and can be successfully inserted into pipes when nothing else fits. Their unique construction gives unparalleled reliability and yet allows both 'line' tracing AND the all important 'end' tracing using the remarkable Sonde technology housed at the very tip of the Tracers. Comes in 20 metre or 50 metre lengths.



PLASTIC PIPE TRACER TECHNICAL SPECIFICATION	
Part Numbers:	YIRPPT20-33 and YIRPPT50-33
Frequency:	Operates at 33kHz
Line detection depth:	2.5m with Cable Avoidance Tool 2.5m with Cable Avoidance Tool XD 3m with MXL Locator
Tip/ End detection depth:	3m with Cable Avoidance Tool 3m for Cable Avoidance Tool XD 4m for MXL Locator
Diameter:	6 mm
Length:	20 m or 50 m
IP Rating: For actual Tracer Rod & Tip:	68
IP Rating: For Plastic Pipe Tracer Casing:	54



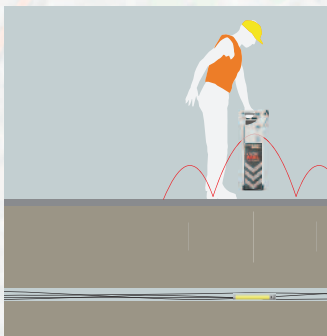
**GENERAL PURPOSE SONDE** The market leading Sonde that allows the route of non-metallic pipes such as sewers, drains and large plastic gas and water mains to be traced. Ideal for finding the position of blockages in pipes and powerful enough to be detectable at 7 metres depth with the MXL and 5 metres with the Cable Avoidance Tool and Cable Avoidance Tool XD.



## GENERAL PURPOSE SONDES 33kHz & 8kHz TECHNICAL SPECIFICATION

Part Numbers:	YIRS-33 and YIRS-8
Frequency:	Transmits 33kHz and 8kHz respectively
Colour:	Orange casing for 33kHz. Green casing for 8kHz
Detection depth:	5 m with Cable Avoidance Tool 5 m with Cable Avoidance Tool XD 7 m with MXL Locator
Dimensions:	39 mm diameter x 121 mm long
End fitting:	M10 threaded stud Supplied with Rod Connector to fit standard drain rods with 7 T.P.I. thread
Battery Type:	Single AA, LR6 Alkaline
Battery Life:	Up to 15 hours
Approvals:	EN301 489 EN300 330
IP Rating:	68

**DUCT SONDE** The C.Scope Duct Sonde is built specifically for tracing cable ducts that are already filled with cables. The long, thin Duct Sonde is the best shape of Sonde for working in that environment.



## DUCT SONDE TECHNICAL SPECIFICATION

Part Number:	YIRSD-33
Frequency:	Transmits 33kHz
Colour:	Yellow
Detection depth:	3.5 m with Cable Avoidance Tool 3.5 m with Cable Avoidance Tool XD 4.5 m with MXL Locator
Dimensions:	24 mm diameter x 300 mm long
End fitting:	Male 3/4" Whitworth (10 T.P.I.) thread at one end Female 3/4" Whitworth (10 T.P.I.) thread at other end
Battery Type:	AAA, LR03, MN2400 Alkaline
Battery Life:	Up to 20 hours
IP Rating:	68

### SPRING COUPLING & ROD CONNECTORS

The Spring Coupling is an accessory for use with Sondes to help negotiate bends and obstructions in pipe systems.

A Lockfast Rod Connector is also available.



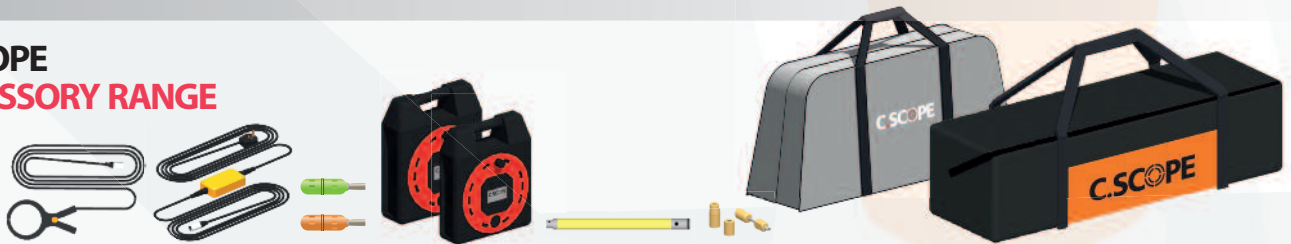
### CARRY BAGS

A C.Scope Carry Bag will keep your C.Scope Pipe & Cable Locator Equipment & Accessories safe when not in use and will still have capacity to carry the additional locating accessories such as site maps, marker paint or pegs to site each time. Choose between the Professional Carry Bag that has specific compartments for each item or the Budget Carry Bag that is a loose holdall type of construction.



# C.SCOPE

## C.SCOPE ACCESSORY RANGE



SIGNAL CLAMP	SIGNAL INJECTOR	GENERAL PURPOSE SONDES	PLASTIC PIPE TRACERS	DUCT SONDE	SPRING COUPLING/ ROD CONNECTORS	BUDGET CARRY BAG	PROFESSIONAL CARRY BAG
--------------	-----------------	------------------------	----------------------	------------	---------------------------------	------------------	------------------------

## C.SCOPE PRODUCT RANGE



COMPATIBILITY	CABLE AVOIDANCE TOOL	CABLE AVOIDANCE TOOL XD	MXL LOCATOR	SGA SIGNAL GENERATOR	SGV SIGNAL GENERATOR	MXT TRANSMITTER
SIGNAL CLAMP	✓	✓	✓	✓	✓	✓
SIGNAL INJECTOR	✓	✓	✓	✓	✓	✓
General SONDE 33KHz	✓	✓	✓			
General SONDE 8kHz			✓			
DUCT SONDE	✓	✓	✓			
PLASTIC PIPE TRACER 20m	✓	✓	✓	✓	✓	✓
PLASTIC PIPE TRACER 50m	✓	✓	✓	✓	✓	✓
PRO. CARRY BAG	✓	✓	✓	✓	✓	✓
BUDGET CARRY BAG	✓	✓	✓	✓	✓	✓

C.SCOPE has a range of products to suit all pipe and cable locating requirements.

For further details of the **MXL Locator and MXT Transmitter**

please ask for a **C.SCOPE MXL MXT HIGH PERFORMANCE PRECISION PIPE & CABLE LOCATOR brochure**.

For further details of the **Cable Avoidance Tool, Cable Avoidance Tool XD, SGA and SGV Signal Generators** please ask for a **C.SCOPE PIPE & CABLE AVOIDANCE TOOLS brochure**.

# C.SCOPE **Locator Accessories**

## Accessory Range for Pipe & Cable Location Equipment

### C.SCOPE INTERNATIONAL LTD

Kingsnorth Technology Park  
Wotton Road  
Ashford  
Kent TN23 6LN  
United Kingdom  
Telephone +44(0)1233 629181  
Fax +44(0)1233 645897  
email info@cscope.co.uk

[www.cscope.co.uk](http://www.cscope.co.uk)

C-Scope has a policy of continuous product development and reserves the right to change the design, specification and labelling without notice. All errors and omissions excepted.

All C.SCOPE products are manufactured under a quality system accredited to ISO9001:2008

