

1 2 3 4 5 6 7

A

A xx-LC-TT

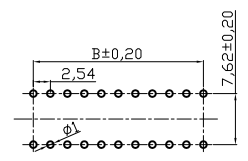
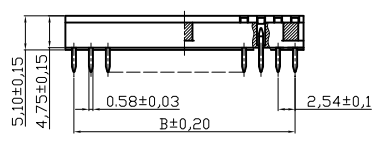
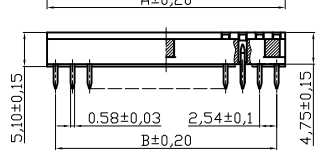
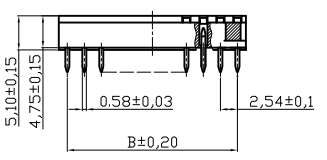
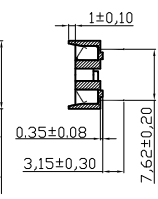
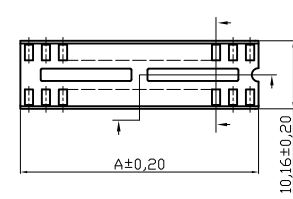
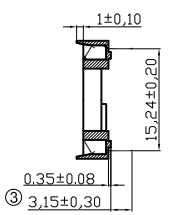
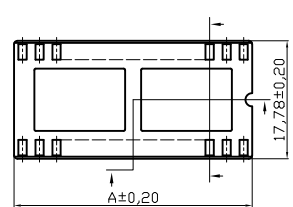
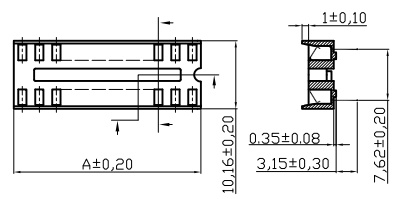
A xx-LC/7-T

A

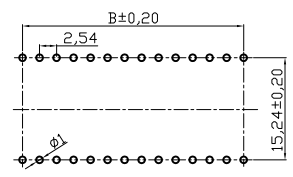
CKT: 06, 08, 14, 16, 18, 20

CKT: 24, 28, 32, 40

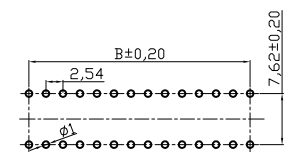
CKT: 24, 28



PCB LAYOUT



PCB LAYOUT



PCB LAYOUT

MATERIAL:
 Contact :
 Phosphor Bronze thickness 0.15mm
 Plating :
 Contact Plating, Tin plated 60u"~80u"
 (Lead free plating)
 Insulator : PBT-4830 , UL 94V-0

SPECIFICATIONS:
 Current Rating : 1A
 Dielectric withstanding Voltage : 1000v RMS/minute
 Insulator resistance : 5000 Megohms min.
 Contact resistance : 20 milliohms initial
 30 milliohms after test.
 Operating temperatures : -55°c to 85°c
 Insertion force : 340g(12 oz) max.per contact.
 Withdrawal force : 80g(2.82 oz) min.per contact

CKT	A±0.20	B±0.20
06	7.62	5.08
08	10.16	7.62
14	17.78	15.24
16	20.32	17.78
18	22.86	20.32
20	25.40	22.86

CKT	A±0.20	B±0.20
24	30.48	27.94
28	35.56	33.02
32	40.64	38.10
40	50.80	48.26

CKT	A±0.20	B±0.20
24	30.48	27.94
28	35.56	33.02

E

E

F

F

RoHS compliant

Scale	1:1						Date	Name	Customer-No.
TOLERANCE							Drawn	24.03.1999	Hellwig
X.	±X						Approved	05.11.2009	Hellwig
X.X	±X								
X.XX	±X	③	Correct dimensions	05.11.2009	Dean				
DIM	TOL	②	Update	21.07.2009	Dean				Drawing-No.
X.°	±X°								
X.X°	±X°	①	Drawn	24.03.1999	Hellwig				
Angle	TOL	Id.	Modification	Date	Name				Replace ASS 0333A CO ASS 0333B CO

ASSMANN WSW-No. **A xx-LC-TT
A xx-LC/7-T**

ASS 0810 CO rev03
 Sheet

G

H

1 2 3 4 5 6 7