

### Cable terminals without isolation - JM type

**3** YEAR WARRANTY

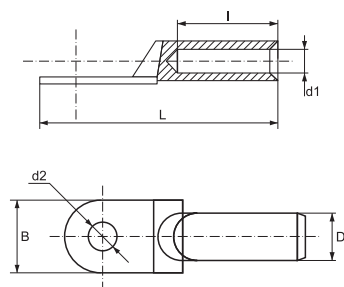


They are used for joining copper conductors - multicore conductors with different section to electrical devices or connections to combine all cores of the conductor, to provide safe connection at tightening in terminals and safe connection at the base of the terminal. Thus the connection stability against vibrations is increased and the possibility for short circuit is decreased. They are made of copper alloy with galvanic tin coating. The connection is realized through crimping pliers, through mechanic pressing of the terminal and conductor. Two types are offered with standard length SC and extended base JM. They are manufactured under modern technology and have high quality and long exploitation period.

#### Technical data:

- Material: copper alloy
- Coating: tin
- Application: general for joining conductors to electrical devices.

Standard: EN 61 238-1



Shoe type	d1 (mm)	D (mm)	d2 (mm)	L (mm)	Packing / Box (pcs)	Catalogue number
JM - 2.5/6	2.2	4.5	6	24	1000 / 3000 / 24000	<b>59240</b>
JM - 4/6	3.0	4.8	6	24	1000 / 2000 / 16000	<b>59241</b>
JM - 6/6	3.8	5.5	6	24	500 / 2000 / 16000	<b>59035</b>
JM - 6/8	3.8	5.5	8	24	500 / 2000 / 16000	<b>59059</b>
JM - 10/6	4.8	6.8	6	25.5	500 / 1500 / 12000	<b>59036</b>
JM - 10/8	4.8	6.8	8	25.5	500 / 1500 / 12000	<b>59037</b>
JM - 16/6	5.5	7.5	6	30.5	400 / 800 / 6400	<b>59038</b>
JM - 16/8	5.5	7.5	8	30.5	400 / 800 / 6400	<b>59039</b>
JM - 16/10	5.5	7.5	10	30.5	400 / 800 / 6400	<b>59040</b>
JM - 25/8	7	9	8	34	250 / 500 / 4000	<b>59041</b>
JM - 25/10	7	9	10	34	250 / 500 / 4000	<b>59042</b>
JM - 35/8	8.2	10.5	8	38	200 / 400 / 3200	<b>59043</b>
JM - 35/10	8.2	10.5	10	38	200 / 400 / 3200	<b>59044</b>
JM - 35/12	8.2	10.5	12	38	200 / 400 / 3200	<b>59045</b>
JM - 50/8	9.8	12.5	8	45	100 / 200 / 1600	<b>59046</b>
JM - 50/10	9.8	12.5	10	45	100 / 100 / 1600	<b>59047</b>
JM - 50/12	9.8	12.5	12	45	100 / 200 / 1600	<b>59048</b>
JM - 70/10	11.5	14.5	10	50	80 / 100 / 1280	<b>59049</b>
JM - 70/12	11.5	14.5	12	50	80 / 100 / 1280	<b>59050</b>
JM - 95/10	13.8	17.5	10	55.5	50 / 200 / 800	<b>59051</b>
JM - 95/12	13.8	17.5	12	55.5	50 / 200 / 800	<b>59052</b>
JM - 120/10	15.5	19.5	10	63	30 / 60 / 480	<b>59053</b>
JM - 120/12	15.5	19.5	12	63	30 / 60 / 480	<b>59054</b>
JM - 150/12	16.5	21	12	71	10 / 50 / 400	<b>59055</b>
JM - 185/12	18.8	23.5	12	78	10 / 40 / 320	<b>59056</b>
JM - 185/16	18.8	23.5	16	78	10 / 40 / 320	<b>59057</b>
JM - 240/16	21.3	26.5	16	92	10 / 30 / 240	<b>59058</b>